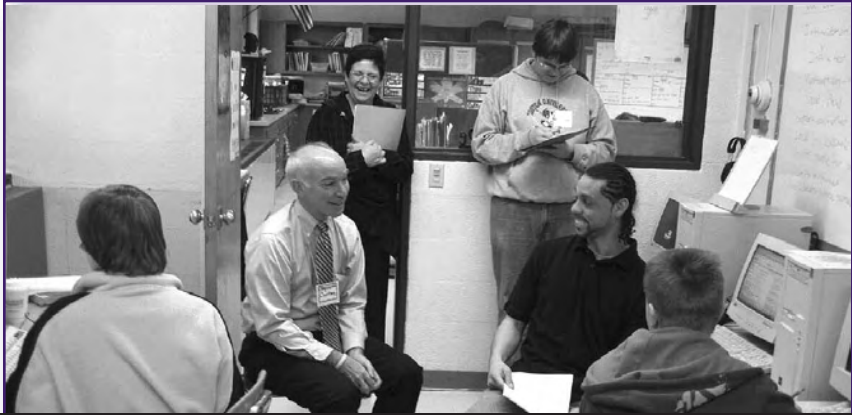


Raising Our Profile

Joe Courtney "Walks A Day In My 'Para' Shoes"



Congressman Joe Courtney Working Alongside Mansfield Instructional Assistant Carlos Figueroa in the Resource Room

Earlier this year, we invited Connecticut's 2nd US House District Representative Joe Courtney to 'Walk A Day in My 'Para' Shoes,' in order to raise awareness of issues facing public school paraeducators. He accepted, and spent the morning of March 20 at Mansfield Middle School alongside our members in Council 760's Chapter 1112 who work as instructional assistants.

The event was part of SEIU's "Walk A Day In My Shoes" campaign, which was launched last year to ensure elected officials and political candidates experience firsthand what life is like for working people. This first-in-the-state event of its type was organized to bring much-needed visibility to paraeducators and demonstrate the critical role we play in making public education work.

By working alongside our members, Congressman Courtney saw for himself how paraeducators interact with

Joe Courtney Hears About the Workplace Issues Instructional Assistant Cindy Cavagnaro Faces Every Day

(Continued on page 4)

Healthcare Reform

Our Message to Lawmakers: "Pooling" Works!

Our members turned out in force at the capitol to urge lawmakers support legislation that would enable Connecticut to join twenty-four other states in "pooling" public workers' healthcare. The Labor & Public Employees (LPE) Committee's March 7 hearing was the first opportunity to testify in support



CSC Council President Cathy Osten Urges Lawmakers to Support the Connecticut Healthcare Partnership

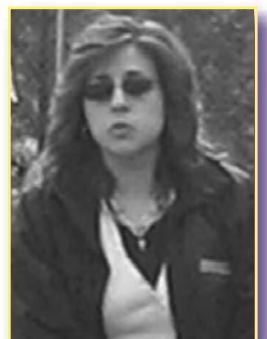
of the Connecticut Healthcare Partnership, and our members' voices were heard; the bill was passed the following week, and at press time, had just been passed by the Appropriations Committee!

Even before the hearings, we began mobilizing co-workers in our worksites, speaking to the news media, and reaching out to potential community allies to build political support for the initiative.

Quoted in the Connecticut Post:

“As far as cost-wise, it needs to be cost-effective. Things are really expensive...do I pay my bills or do I want health insurance?”

Athena Kurtzenacker
 Shelton Public Schools Bus Driver,
 First Student, Inc.
 Vice-President, Chapter 195, Council 760



With local municipalities and school districts facing economic uncertainty, support for cutting healthcare costs for municipal workers and achieving tax savings through "pooling" coverage has

(Continued on page 5)

Postmaster: Please forward address changes to:
 CSEA, 760 CAPITOL AVE., HARTFORD, CT 06106

In this Edition:

Council 400 Retiree Chapter Meetings & Events	Page 2
Our Actions...in Brief	Page 2
It Doesn't Get Any Better Than This	Page 3
Another Win for Supervising Judicial Marshals	Page 3
Our Benefits	Page 4
New Long Term Care Healthcare Options	Page 5
Social Activities	Page 6
Classified Advertising	Page 7
Deaths Reported	Page 8



Council 400 Retiree Chapters' Meetings & Events

This information will be posted at our website's "Events Calendar" as well. Select the date and the Chapter for further details, such as time, location, and contact information. Updated information and details for any chapters' events not available by our March 21 publication deadline for this edition will also be posted online.

CONNECTICUT EVENTS

COUNCIL 400 DELEGATES: Thursday, April 17, 10:00 a.m., CSEA/SEIU Local 2001 Union Hall, 760 Capitol Ave., Hartford. Program: Reports from Council Committees. Contact: Ed Daly at (860) 871-9482.

CHAPTER 401 (Hartford area): Thursday, April 3, 1:00 p.m. (light lunch served at 12:00 p.m.), CSEA/SEIU Local 2001 Union Hall, 760 Capitol Ave., Hartford. Speaker: CSEA/SEIU Local 2001 Executive Director Bob Rinker on retiree issues. Contact: Katherine Goulet at (860) 675-4053.

CHAPTER 402 (Danbury area): Wednesday, April 9, 10:00 a.m., ("potluck" luncheon follows meeting), United Methodist Church, 5 Clapboard Ridge Road, Danbury. Speaker: Randy Oster on Connecticut State Employee long-term care insurance offered by MetLife. Contact: Dawn Gallagher at (203) 748-2018.

CHAPTER 403 (Norwich area): Tuesday, April 8, 1:30 p.m. (meeting room not available until 1:00, refreshments prior to meeting), Rose City Senior Center, 8 Mahan Dr., Norwich. Program to be announced; check website "Events Calendar" for details.. Contact: Gail Carr at (860) 822-0788.

CHAPTER 404 (Waterbury area): Tuesday, April 8, 10:30 a.m. (social, meeting follows), Elks Club, 758 Rubber Ave., Naugatuck. Speaker: Randy Oster on Connecticut State Employee long-term care insurance offered by MetLife. Door prizes. Contact: Armand Rosanelli at (203) 758-5122.

CHAPTER 405 (New Haven area): Wednesday, April 9, 12:30 p.m. (social, meeting follows at 1:00 p.m.), Smart Living Center at 297 Boston Post Rd., Orange. Speaker: Dr. Adam Mednick, M.D. on Parkinson's disease. Contact: Chapter President Andy Gambardella at (203) 468-7376.

CHAPTER 406 (Middletown area): Tuesday, April 8, 1:00 p.m., (social, meeting at 1:30 p.m.), American Legion Post 75, 58 Bernie O'Rourke Dr., Middletown. Speaker: Poetry readings by Carol A. Christopher and Musical Selections by the Back Swamp Music Group. Members asked to donate non-perishable or canned food for Amazing Grace Food Pantry. Contact Elizabeth Harvey at (860) 917-3740.

CHAPTER 407 (Bridgeport area): Wednesday, April 16; 12:15 p.m. (social, meeting at 1:00 p.m.), St. Joseph's of Stratford National Catholic Church, 1300 Stratford Rd., Stratford (on Rt. 113 toward Sikorsky Airport). Speakers: Bridgeport Hospital's Ahlbin Rehabilitation Center representative Peter Rondie on the benefits of exercise. Contact: Celeste McGrath at (203) 378-4576.

CHAPTER 408 (Willimantic area): Wednesday, April 9; 1:00 p.m. (coffee, meeting at 1:30 p.m.), McSweeney Regional Senior Center, 47 Crescent St., Willimantic. Speaker: Mike Halligan on Connecticut State Employee long-term care insurance offered by MetLife. Meeting open to the public. Contact: Donna Linkkila at (860) 455-0883.

CHAPTER 410 (Windsor Locks area): Monday, April 14, 1:00 p.m., VFW Post 6123, 40 Fairview St., Windsor Locks. Program: "Corned Beef and Cabbage" dinner. Cost: \$8/member. Reservation deadline: April 4. Contact: Carm Wopschall at (860) 745-7017.

CHAPTER 411 (Rocky Hill area): Thursday, April 10, 1:00 p.m. (social follows meeting), William J. Pitkin Community Center, 30 Greenfield St., Wethersfield. Speaker: CT Surgical Group Podiatry Division D.P.M. Ashley Shepard on foot care. Contact: Florence Egan at (860) 666-0382.

CHAPTER 412 (Putnam area): Tuesday, April 15, 1:30 p.m. (social follows meeting), Knights of Columbus, 64 Providence St., Putnam. Speaker: Council President Ed Daly on issues impacting retiree members. Refreshments, door prizes. Meeting open to the public. Contact: Don Gladding at (860) 564-9092.

CHAPTER 414 (Torrington area): Monday, April 21, 9:30 a.m. (coffee, meeting at 10:00 a.m.), UCONN Torrington Agriculture Building, 855 University Dr., Torrington. Speaker: CSEA/SEIU Local 2001 Political Director Rick Melita on legislative and political organizing efforts. Contact: President Karen Pineman (860) 354-6727.

CHAPTER 415 (Manchester area): Monday, April 28, 1:00 p.m., Elks Lodge, 30 Bissell St. Manchester. Program to be announced; check website "Events Calendar" for details. Refreshments will be served. Contact: Ed Daly at (860) 871-9482.

CHAPTER 416 (New London area): Tuesday, April 8, 12:00 p.m. (luncheon, business meeting at 12:30 p.m., program at 1:30 p.m.), Groton Public Library, 52 Newtown Rd., Groton (NOTE LOCATION CHANGE). Speaker: Elder law specialist Attorney Kathleen McNamara on Probate Courts and legal procedures, with questions and answers to follow. Contact: Jean Thorsen at (860) 388-2788.

CHAPTER 417 (Plainville area): Wednesday, April 9, 1:00 p.m. (social, meeting follows), Church of Our Savior Episcopal Church, 115 West Main St., Plainville. Speaker: CT Office of the Comptroller's Retirement Division representative on major benefits available to State retirees. Contact: John Lessor at (860) 628-0021.

CHAPTER 418 (4Cs): Thursday, April 10, 10:00 a.m., Congress of CT Community Colleges, 907 Wethersfield Ave., Hartford. Program to be announced; check website "Events Calendar" for details. Contact: Aldo Sicuso at (860) 346-3550.

"DAY AT THE MOHEGAN SUN," Tuesday, April 15, 7:30 a.m., bus pick-ups at up to 3 locations, including CSEA/SEIU Local 2001 Union Hall, 760 Capitol Ave., Hartford. Cost: \$20 per person (includes bus transportation and gratuity for driver). Reservation deadline: April 7 (see flyer at website "Events Calendar" for reservation form). Contact: Katherine Goulet at (860) 675-4053.

FLORIDA & OTHER STATES' EVENTS

CHAPTER 421 (Northeast Florida), Thursday, April 3, 11:30 a.m. (luncheon, meeting follows), Country Harvest Buffet, 2400 S. Ridgewood Ave. (Rte 1), South Daytona, FL. Buffet (no reservations needed). All State of Connecticut retirees invited. Contact: Len Albert (386) 615-6805.

CHAPTER 425 (Sun Coast Florida), Tuesday, April 8, 11:00 a.m., Philippe Park, 2525 Philippe Pkwy, Safety Harbor, FL. Picnic with hamburgers and hot dogs. Cost: free. Members may bring salad or dessert to share. Contact: Hank Bracker (727) 848-0089.

Chapter Secretaries and Program Coordinators:
The May edition deadline for meeting details is Friday, April 18.

Our Actions...in Brief

Members' Current Issues, Meetings, & Events

➤➤➤ **Read More About It at our New "Blog:"** Our new website is up and running, and one of the new features is an interactive web log, or "blog," which will allow for more rapid communication on the issues important to us. Our goal is to bring focus to worksite and agency level stories that we often can't highlight here in the CSEA News, so Council and Chapter leaders will be provided direct access for posting entries in the coming weeks. Log on to www.seiu2001.org and select "Blog" from the left menu to read recent entries at "CSEA Connections," and post a comment at the stories that interest you!



(Look for the Arrows Symbol ➤➤➤ for more "Actions...In Brief")

➤➤➤ Strengthening Hartford's Living Wage: In

February, our SEIU State Council began mobilizing our members working as school bus drivers, monitors, and aides for the transportation companies contracted to Hartford Public Schools to support a resolution creating a task force to review the city's Living Wage Ordinance (LWO). As Council 760, Chapter I96 President Stephanie Chisholm (pictured here) said in testimony at a Court of Common Council public hearing in late-February, "Bringing the LWO into affect at our worksite two years ago made a real difference in my life, and enabled nearly two hundred working families right here in Hartford to earn a self-supporting income." Members submitted testimony and called their local representatives on the City Council, and the resolution passed unanimously on March 24. We are again mobilizing members working for the City's contractors to sign-up with SEIU Organizer Rochelle Palache at (860) 251-6083. Our next step is to urge the task force to answer the question, "with the current living wage, can working people afford to live and raise their families in Hartford?"



Our President's Desk

It Doesn't Get Any Better Than This



Michael J. O'Brien
Supervising Sanitary Engineer,
CT Dept. of Environmental
Protection
Executive Council President

I remember that beer commercial where a bunch of old friends are sitting around a campfire drinking beer after a full day of fishing or hunting and someone says, "it doesn't get any better than this!" We've all had those moments, though they are few and far between.

The reality is that things can get better for working families, both in their lives and in the services we deliver to them. Last month, SEIU launched a new contest called, "Everybody Wins," and we have been asking our members to submit their ideas on how to improve the delivery of quality public services with a chance to win a cash prize.

One good thing for public sector workers in Connecticut that happened this past month was the first two legislative committees' passage of the bill that provides for "pooling" in the State's healthcare plan. The worksite legislative action leaflet with instructions, contact info, and a sample script we mailed to the presidents of all Council 760's chapters to mobilize our members to call their lawmakers no doubt helped persuade both committees to pass it!

The plan doesn't reduce State worker or retiree benefits as some people fear, and instead empowers municipal and board of education workers to voluntarily join and reap the benefit of lower rates for

coverage because of the size of our "pool." In turn, as municipal property taxpayers, we would also share in the lower costs our cities and towns would bear to provide their employees quality healthcare coverage. This is a true example of the "economy of scale."

By the way, this won't qualify as an idea to submit to the "Everybody Wins" contest because twenty-four other states in the country already "pool" their state and local public service workers!

But things can also get worse. One does not have to look very far for signs of trouble in the economy. Most working people are probably not looking forward to looking at their quarterly IRA, 401K or 457 retirement plan statements after the beating the stock market has taken since the first of the year.

Food, milk and gasoline prices are up. Heating oil costs, electric rates and foreclosures are also up. Yet we have an Administration in denial in Washington, DC.

There are warning signs that the blame for economic troubles will be blamed on public service workers in the news media. The editor's column in *Connecticut Magazine's* April 2008 edition reads:

"No one in the State Capitol seems willing to deal with the fact that automatic, unquestioned yearly increases in state-employee salaries and benefits are gradually eroding the government's ability to provide programs and funding for people in Connecticut who really need them."

A recent issue of the *Hartford Business Journal* featured a front-page article above the fold about the status of the State employee pension fund. The article focused on the state budget impact of future

(Continued on page 6)

Victory through Unity

Another Win for Supervising Judicial Marshals



SJM Council Members Kevin Grosse, Mark O'Brien, Tom Grodecke, and Joe Tomasello at the Legislative Office Building

In less than four weeks, our members working as supervising judicial marshals for the Connecticut Judicial Branch ratified and then successfully lobbied the General Assembly's Appropriations Committee to approve a new four-year contract. The story of this win contains more than a few pleasant surprises we hope to duplicate as we look ahead to negotiating additional contracts and advocating important legislation in uncertain economic times!

After remarkably quick, smooth negotiations with the Judicial Branch, we reached a tentative agreement in early-February. Though foul weather canceled our Council's regular meeting, leaders quickly mobilized a ratification vote at our union hall the following week. Members unanimously approved the agreement, which includes the following gains:


- ✓ Wage increases, effective July 1 each year of the contract - 3% for the first year, 3.5% for the second, and 3% for the third and fourth years;
- ✓ Step movements, or annual increments, on-time on January 1 of each year; and
- ✓ First-ever tuition reimbursement for members obtaining college degrees.



“ We thank the officers of the Council and union staff for negotiating our new contract, which we reached without binding interest arbitration. ”

Mark O'Brien
Supervising Judicial Marshal, CT Judicial Branch
President, SJM Council

(Continued on page 8)




CSEA NEWS
*The Voice of Connecticut's
Public Service Employees & Retirees*

USPS # 224-100 ISSN # 0273-6055
Published Monthly by
CONNECTICUT STATE EMPLOYEES ASSOCIATION
Local 2001, Service Employees International Union, CTW, CLC

Michael J. O'Brien	President
Patrice Peterson	Secretary/Treasurer
Robert D. Rinker	Executive Director
Matt O'Connor	Communications Director
Jason P. Webster	Graphic/Technical Assistance

INSERTION DEADLINE: 1st of prior month.
MAILING ADDRESS: CSEA/SEIU Local 2001, 760 Capitol Avenue, Hartford, CT 06106; **PHONES:** (860) 951-6614, toll-free in Connecticut: (800) 894-9479, toll-free in Florida: (800) 437-5630; **FAX:** (860) 951-3526; **INTERNET:** www.csea-ct.com.

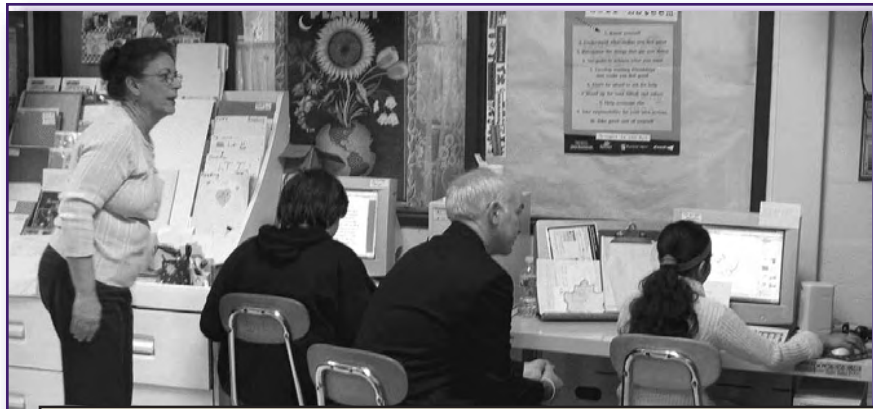
"CSEA NEWS" (USPS 224-100, ISSN 0273-6055) is published monthly for \$2.80 per year members, \$5.00 per year non-members, by CSEA/SEIU Local 2001, 760 Capitol Ave., Hartford, CT 06106-1263. Periodicals postage paid at Hartford, CT. Postmaster: Send address changes to "CSEA NEWS," 760 Capitol Ave., Hartford, CT 06106-1263.

Recycled Paper 

Joe Courtney "Walks A Day"...

(Continued from page 1)

students and teachers in a variety of instructional settings. Meanwhile, our members had the opportunity to talk to the Congressman about the issues that impact us; low wages, the high cost of healthcare, and lack of awareness for the work we do.



Instructional Assistant Jan Wilcox and Joe Courtney Working with Special Needs Students in Reading/Language Arts

Paraeducators play a critical role in closing the achievement gap for students in our schools, yet, for far too long, have remained 'invisible' to legislators when lobbying for resources to raise poverty-level wages and invest in professional development and training.

The Willimantic Chronicle featured a front-page article highlighting the visit, quoting and featuring several members in photos, in the following day's afternoon edition. It is linked in the entry "More Members in the News on 'Walk A Day in My 'Para' Shoes,'" at our website's new blog, "CSEA Connections."



Instructional Assistant Debra Breault Tells The Willimantic Chronicle About her Role in the Life Skills Classroom

The day before the event, Wayne Norman interviewed Chapter President Janette Smith and Vice-President Sharon Hagans on his WILLI-AM 1400 radio Morning Show, providing a full hour of airtime to talk about our issues. The audio is also linked at our blog in the entry titled, "Paras On the Air."



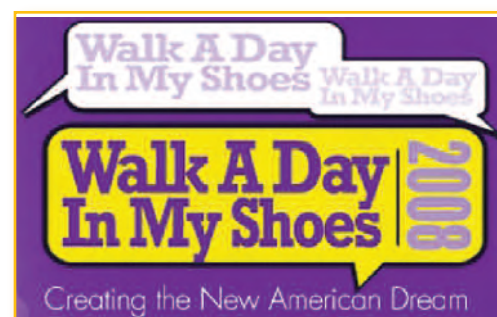
Instructional Assistant Sylvia Griffin Discusses the Congressman's Visit at Our Press Conference

Thanks to the efforts of our members working for the Mansfield Board of Education, Congressman Courtney will be better able to implement policies that support our paraeducators. And the next time he has to cast a vote on federal education funding for the states, you can bet he'll be thinking about what it was like to "Walk A Day In My 'Para' Shoes!"



Congressman Joe Courtney, Chapter 1112 Members, Union Leaders, Mansfield Board of Ed Members, and District Administrators

Contact Education Coordinator Dave McCluskey or Political Director Rick Melita at the union hall at (800) 894-9479 to organize inviting your local elected officials to come spend time with you on the job!



Our Benefits

Updates on Unique Membership Incentives

★ **\$12,000.00 and Growing:** That's how much we had raised for our Bernard H. McCusker Memorial Scholarship Fund by press time! Congratulations to our first group of 2008 McCusker Hall of Fame inductees, who will be included in the "McCusker Awards Night" booklet in June:

- Council 400: \$6,835.00
- CSC Council: \$1,000.00
- AMECSS: \$1,000.00
- Council 400 Member Lawrence Lunden: \$600.00
- Council 400, Chapter 415: \$500.00
- P-4 Council, Chapter 238: \$350.00
- Council 400, Chapter 410: \$250.00
- Council 400, Chapter 403: \$218.00
- P-4 Council, Chapter 97: \$200.00
- P-4 Council, Chapter 96: \$200.00

- Council 400, Chapter 414: \$200.00
- Council 400 Member John Kirker: \$200.00
- Council 760, Chapter 1112: \$100.00
- P-4 Council, Chapter 151: \$100.00
- P-4 Council, Chapter 56: \$100.00
- LAC Co-Chair Lynn Coda-Klein: \$100.00
- Council 400 Member Karen Pineman: \$100.00 (in honor of her "kids" in Mozambique)
- Organizing Director Stacey Malitz: \$100.00
- Council 400 Member Kay Goulet: \$78.00 (\$50.00 in memory of Everett Kandarian and Marian Machini)
- Council 400, Chapter 418: \$75.00
- P-4 Council, Chapter 75: \$50.00
- Council 400, Chapter 425: \$50.00
- Council 400 Member Charles White: \$50.00
- P-4 Council, Chapter 224: \$25.00
- Council 400 Member Barbara Larese: \$10.00
- Council 400 Member Nancy Driscoll: \$50.00 (in memory of Scott Driscoll)
- Council 400 Member Doris Curtis: \$25.00
- Council 400 Member Sadie Chapman: \$25.00

"Pooling" Works!...

(Continued from page 1)

grown. Partner labor unions, as well as local elected officials, non-profit service providers, and small business owners joined our members at the hearing and showed their support for the Connecticut Healthcare Partnership.



“ Every time we negotiate a raise, it is eaten by healthcare premiums, which is why I have to work a second job after school every day to have enough to pay for insurance. ”

Carol Parker

Paraprofessional, Stafford Public Schools
Co-President, Chapter 151, Council 760

Since 1991, our members working for the State have called on Connecticut lawmakers to bring municipal employees into the State's healthcare plan in order to increase purchasing power and lower overall costs. In February, General Assembly House Majority Leader Chris Donovan appointed our Executive Director, Bob Rinker, to his Working Group to review the legislation, recognizing our efforts to lay the ground work for the "pooling" concept.

Following the LPE Committee's vote, copies of a "legislative action" leaflet with simple steps to enable members to call their lawmakers were mailed to all of Council 760's Chapter presidents. It is also available to download at our website, along with a template for writing letters to State Representatives and Senators.

Access both documents at www.seiu2001.org/Health_Care_Reform_1.aspx.



We are winning on this issue because the State healthcare plan currently insures more than 200,000 lives and offers quality benefits at a decent price. Increasing the "pool" to as many as 600,000 lives would strengthen the plan and save resources for cash-strapped towns and school districts, which they could instead invest in local public services.

Contact our Communications Director Matt O'Connor at (800) 894-9479, ext. 129, to sign-up as a "healthcare reform messenger" and be part of the effort to make the Connecticut Healthcare Partnership one of our "2008 victories" today!



P-4 Council Member John Czaja with Wife Mary and Daughter Kathryn, a 2007 McCusker Scholarship Recipient

With your support, we're on our way to another record-setting year! Visit our new website's "Incentives" page at www.seiu2001.org/Incentives/Default.aspx to access the "McCusker Scholarships" page for an online Commitment Form. Or mail your contribution, payable to "McCusker Scholarship Fund" to our union hall at 760 Capitol Ave., Hartford, CT 06106.

Our Retirement Security

New Long Term Healthcare Options



Hollis Block
Retiree Coordinator
CSEA/SEIU Local 2001

Comptroller Nancy Wyman recently announced the selection of MetLife as the new Long Term Healthcare provider for State employees and retirees. The program is available to full-time, active employees working seventeen and a half hours or more hours per week, retirees, and spouses, civil union partners, domestic partners, parents, parents-in-law, grandparents, step parents, step grandparents, in-law grandparents, as well as adult children.

In the face of rising costs, our union has for advocated for affordable, comprehensive long-term care coverage for our members for several years. Of equal concern are questions about the quality of care in skilled facilities, as well as for receiving care at home for as long as possible.

According to the Comptroller, the product is designed to protect against the high cost of long-term health care, whether at home or in a skilled nursing facility. It has been approved by the Connecticut Partnership and has a Medicaid Asset Protection feature not found in plans that lack their approval.

According to the Connecticut Partnership, in its Survey of Home and Community Based Provider Rates, the average private daily rate for skilled, intermediate nursing home care is \$299.00. That's an average annual cost of \$109,100.00! How many of us can afford this for one of our loved ones?

MetLife will be contacting State employees and retirees through upcoming "open enrollment" health fairs, at chapter meetings, and by mail to explain its long term care insurance. It is up to each individual and their family to

(Continued on page 8)

Speaking Out for Criminal Justice Reforms:

CSC and P3-B Council members working in the Department of Correction (DOC) mobilized for legislative hearings on criminal justice reforms in mid-March, and made their voices heard in support of two proposed bills. One includes the provision we recommended to the Judiciary Committee requiring an inmate's parole eligibility be based on attainment of a high school diploma or its equivalent, which would result in recruiting additional education professionals and vocational instructors. Both bills will address the lack of support and training for correctional supervisors, as well. Read our members' written statements, and watch video of their testimony and news interviews at the "Criminal Justice Reform Messengers in Action" entry at our website's blog.



CSC Council Vice-President Mark Lucey Tells NBC-TV Channel 30 Why DOC Professionals Need More Mental Health Training

Editor's note: at press time, the Judiciary Committee passed both bills favorably, moving them on to the House for a full vote.

Our President's Desk...

(Continued from page 3)

healthcare costs for active employees and retirees as required to be calculated (but not implemented) by the so-called GASB 45 regulations.

This is economic fear mongering at its best, and if you don't think that these two news items are connected, I have a bridge in Brooklyn for sale!

I don't want a column with such a cheerful title to end on such a "gloom and doom" note. But the reality is that media attacks on our benefits, threats of federal funding cuts to services many of our members provide, and the ever present push for private sector outsourcing are all reminders

Hartford Business Journal
March 10, 2008

Pension Debt Among Worst In Nation

Lawmakers propose solutions to honor obligations to future retirees

of why now, more than ever, we need to be stronger together in SEIU and in the larger labor movement.

Editor's note: share your comments with our Local President by sending him e-mail to mobrien@csea760.com

Telecommuting - It Takes Passing a Law:

Our P-4 Council members are taking the lead on a proposed new bill that will improve State workers' telecommuting options. The bill would allow us to create telecommuting options at the agency level, much like



House Majority Leader Chris Donovan with P-4 and CSC Council Members Following Hearings on Telecommuting Legislation

alternate work schedules, which include flex-time, four-day workweeks, and "5/4" schedules. Telecommuting also boosts productivity, reduces traffic congestion, lowers pollution, and decreases demand on our strained transportation system. At press time, the Government Administration and Elections Committee had passed the bill favorably, sending it to the General Assembly's House chamber for a full vote. A worksite legislative action leaflet to mobilize outreach to lawmakers for members in our State Division Councils is in the works, and will be available online at our website once completed.

Fairness for Judicial Professionals: SJM Council members are mobilizing support for a bill allowing purchase of retirement credits for judicial marshals with prior courtroom security service. Our SEIU State Council brought members in our Local together with marshals in SEIU/IBPO Local 731 to testify in support of "An Act Concerning Additional Retirement Credit for Judicial Marshals" in late-February. After we testified at a Labor and Public Employees Committee hearing, the bill was passed favorably onto the Judiciary Committee, and at press time, it had passed unanimously for a second time. The bill will now go to the House floor. Contact Political Director Rick Melita at the union hall at (800) 894-9479 to be part of the next steps in passing this important legislation and scoring another win for our SJM Council!



SJM Council Members Tom Grodecke and Joe Tomasello Urge Lawmakers to Support Retirement Security for Marshals

Social Activities



Boston Duck Tour
The City's Most Exciting Land & Water Attraction!
Saturday, May 31

Cost: \$62 per person
Reservation deadline: Payment due April 18
Includes: Roundtrip motorcoach to Boston, duck vehicle tour of the city and the Charles River, and time for shopping and dining at Quincy Market

BASEBALL HALL OF FAME & MUSEUM
HOWE CAVERNS & THE OMMEGANG BREWERY

Monday, Jun. 2 – Tuesday, Jun. 3

Cost: \$243 per person twin/triple or \$293 per person single
Reservation deadline: \$75 per person due March 10 & final payment due April 14
Includes: Admission to the National Baseball Hall Of Fame, Howe Caverns (plus boat ride on the underground Lake of Venus), and to Brewery Ommegang (plus beer sampling), 1 night accommodations, breakfast & dinner, and deluxe motorcoach



UPCOMING TRIPS and ACTIVITIES

- Ellis Island & Statue of Liberty Tour**
Sat., Jun. 14
Reservation deadline: May 14
\$54 includes travel, ferry, and admission
- Glorious Estates of the South**
Wed., Sep. 10 – Thu., Sep. 18
Reservation deadline: May 7
\$1,285 per person includes travel, accommodations, and sightseeing
- 6-Day Tour of the Ireland Coast**
Thu., Nov. 6 – Tue., Nov. 11
Reservation deadline: Jun. 2
From \$1,059 per person includes motorcoach, airfare, accommodations and sightseeing

Trips sponsored by CSEA/SEIU Local 2001 Social Activities Committee. For more information call the Local hall in Hartford at (800) 894-9479. **Make checks payable to CSEA/SEIU Local 2001 Social Activities Committee and mail with reservation form below to the committee at: 760 Capitol Ave., Hartford, CT 06106.** Please call for availability after deadline. No refunds on cancellations on and after deadline. Travel insurance (cancellation waivers) available on some trips (see flyer) due with initial reservation.
Reservations accepted on a first-come, first-served basis.

DISCLAIMER: CSEA/SEIU Local 2001 is not responsible in whole or in part for any loss, damage, injury, financial loss, or whatever to persons or property, however caused, during or in connection with any tour, trip or activity.

Canada Cruise
Saint John, New Brunswick & Halifax, Nova Scotia
Mon., Sep. 1 – Sat., Sep. 6

Cost: from \$549 per person
Reservation deadline: Call Friendship Tours for availability at (800) 243-1630
Includes: Roundtrip motorcoach to NY Pier, 5 nights accommodations aboard the Carnival's Victory, all meals on board, 24-hr room service, spectacular nightly entertainment, & array of daily activities

CSEA/SEIU Local 2001 Social Activities RESERVATION FORM

Name of Trip	Date of Trip	
Name		
Address		
City	State	Zip
Home Phone	Work Phone	
Number of Tickets	Amount Enclosed	Cancellation Insurance Yes <input type="checkbox"/> No <input type="checkbox"/>
Pick-up Place	Traveling with	
<input type="checkbox"/> Non-Smoking	CSEA Chapter # _____	<input type="checkbox"/> Non-member

CSE CREDIT UNION NEWS

Rate On New Car Loans



5.85%

Annual Percentage Rate

Finance the purchase of a new car and choose a term that's right for you, up to 5 years. Six year loans available at 6.25% APR !

Finance up to 100% cost of the vehicle including Tax, Title, Warranty and Conveyance Fee.

Sign up for direct payment from your State pay or retirement for worry free payments.

Print a Loan Application at www.csecreditunion.com and mail or deliver it to any branch location before you shop. Receive your pre-approval and then negotiate your best price.

Rates like these won't last forever!

Visit Our Web Site

to find all the essential information about the products and services we have to offer. You can even print a loan application online! Best of all, it's accessible from your personal computer 24 hours a day, 7 days a week.



JUST A REMINDER

Please use our 24-hour Home Teller Service or your CSECU ATM Card to access your savings or checking accounts when we're closed for the weekend or in observance of legal holidays.

Dividend Rates – 1st Quarter 2008

	Dividend Rate	Annual Percentage Yield
REGULAR SAVINGS	4.25%	4.34%
SHARE DRAFTS (Checking)	2.25%	2.28%
CLUB ACCOUNTS	3.25%	3.30%

Minimum opening balance \$25.00. The annual percentage yield is accurate as of the last dividend declaration date. Rate may change after the account is opened. Fees or other conditions may reduce the earnings on the account.

7 Full-Service Offices To Serve You

NORWICH Uncas on Thames 401 West Thames St. Norwich CT 06360 (860) 889-7378	HARTFORD 84 Wadsworth St. Hartford, CT 06106 (860) 522-5388 (Savings) (860) 522-7147 (Loans)	NEW HAVEN 1666 Litchfield Turnpike Woodbridge, CT 06525 (203) 397-2949
MIDDLETOWN P.O. Box 2485 Middletown, CT 06457 (860) 347-0479	STORRS 1244 Storrs Rd. Storrs, CT 06268 (860) 429-9306	SOUTHBURY Southbury Training School P.O. Box 644 Southbury, CT 06488 (203) 267-7610
		NEWINGTON O'Neil Plaza 2434 Berlin Turnpike Newington, CT 06111 (860) 667-7668

Hours: Main Office: Mon.-Fri. 9 a.m. to 4 p.m. • Branches: Mon.-Fri. 9:30 a.m. to 4 p.m.
 DRIVE-UP TELLER (Hartford only): Mon.-Fri., 9 a.m. to 4 p.m. Paydays open until 5:00 p.m.

Classified Advertising

Classified Ads which are not renewed within 2 months of date placed will be removed after 3rd consecutive month of publication. To place or renew your ad, which is free to active and retired members, send the text to CSEA News editor Matt O'Connor by mail to our Union Hall in Hartford or by e-mail to moconnor@csea760.com, and include "Classified Advertising" in the subject line.

FOR SALE

MANHATTAN CLUB, TIMESHARE, Silver Junior unit, Central Manhattan walking distance of Rockefeller Center, Lincoln Center and Broadway. 7 nights, flexible dates. Bluffton, SC (843) 705-2270.
THE VILLAGES, FL VILLA, 2 BD/2 BA, exc. condition, prime location. \$149,000/unfurnished, \$152,900/furnished. The Villages, FL (352)750-0399 or e-mail to villager506@aol.com.
LAKE BUENA VISTA, FL TIME SHARE, Sheraton Vistana Resort, 2 BD/2 BA, 1st flr, exc location, close to Disney, wk 42 (Oct). \$1,500 OBO. Lady Lake, FL (352) 430-0664.
FREE TIMESHARE w/purchase of 1/2 acre land in Lehigh Acres, FL. Waterbury (203) 757-2751.

DELRAY CAMPER, 11 ft, self-contained, good condition, cabover converts to lounge, not smoked in. \$1,500 OBO. Bridgeport (203) 335-3951.
1996 ZRT 600 SNOWMOBILE, perfect new track/144 studs, v-force reeds, 2 hoods, D&D exhaust, must sell - make an offer; 1996 Trailblazer ATV, needs transmission, good for parts, must sell - make an offer. Madison (203) 779-9080.

10 CUSTOM MADE, COMMERCIAL QUALITY WINDOWS, 24" x 72" x 1" double pane, one piece, tinted, no frame, \$45 each. Bristol (860) 589-6195.

WOOD BURNING STOVE, heats up to 6 rooms, \$100. Electric kitchen stove, \$100. East Haven (203) 469-6248.
ARIENS SNOW BLOWER, 6 hp motor, not working – use for parts. \$125. Enfield (860) 741-2950.

PLAYER PIANO, turn of century electrified model, includes 20 music rolls, \$1,495. Plymouth (860) 283-0663.

HAMMOND ORGAN, walnut finish, like new, never a minute of trouble, see to appreciate (evenings). New Milford (860) 350-0783.

4 HITCHCOCK CHAIRS; electric stove; dining room table with 6 chairs; several serving pieces of sterling silver; 12-piece China serving set. Farmington (860) 673-4504.

COUCH, 2-yrs old, camel, microfiber with 2 recliners and lounge attached, excellent cond., was \$1,599, selling \$600; Sanyo 32" TV, cable ready, barely used, excellent cond., \$250; Kenmore full size upright Freezer, excellent cond. \$200. Hotpoint apartment size refrigerator with freezer, \$50. Enfield (860) 749-1784.

MIKASA FINE CHINA, black opus pattern, full service for 12, plus many beautiful serving pieces, like new, \$300; Reed and Barton luxury stainless service for 12, simple elegant pattern, plus many serving pieces, lifetime warranty, used twice, \$100. Canaan 860/824-0087.

KEVIN YOKILIS AUTOGRAPHED ITEMS, baseball inscribed with "happy birthday" or "Greek god of walks," with letter of authenticity, \$59; baseball, \$50; 16x20 photo, \$45; other items available. Southington (860) 621-3131.

HENRIETTA HAM children's books, \$15.85/each; T-Shirts, \$13.95 (youth), \$15.95 (adult); frisbees, \$4.19/each. Hebron (860) 228-2138 or e-mail to DRaheb21@sbcglobal.net.

FOR RENT

PROVINCETOWN, MA TIMESHARE CONDO, 2 BD/2 BA, 1,000 sq. ft unit, sleeps 6, views of Bay area from deck, near beaches and Commercial Street activity. Avail. select weeks May – Oct., \$900 – 1600/wkly. Avail. Nov. - Apr., \$450 – 850/wkly. Wolcott (203) 879-1804.

OLD LYME WATERFRONT COTTAGE, 3 BD, Hawk's Nest Beach. Avail Mar., wkly July, May, Jun., & Sep. available at reduced rates. Old Lyme (860) 434-1695.

GROTON LONG POINT WATERFRONT COTTAGE, 4 BD. Avail Jun. - Sep. Jul. and Aug. rate \$2,000/wkly. Jun. and Sep. rate negotiable. Groton (860) 887-6679 or send e-mail to pmforschehr@snet.net.

OTIS, ME LAKEFRONT COTTAGE, next to Elisworth – the "Gateway to Acadia" and near Bar Harbor and Bangor, on Beech Hill Pond (5 mi long, 1 mi wide, 115' deep) with dock and small sandy beach, 200' from public boat launch, pets welcome. \$1,000/wk Jul. and Aug., \$850/wk Jun., Sep. – Oct. Windsor Locks (860) 690-4856.

ARUBA TIMESHARE, La Cabana Beach & Racquet Club, ground flr overlooks pool area and beach, 1 BD unit, sleeps four, avail Apr. 19 – 26. \$500 for week. North Haven (203) 671-5496 or e-mail to JKAL48@AOL.COM.

OCEAN REEF YACHT CLUB & RESORT, Freeport, Bahamas. 2 BD units sleep 6, fully equipped. \$900/unit/weekly. Photos avail at www.orvc.com. Hartford (860) 841-3107.

VERO BEACH FL CONDO, 2/2, third (top) flr/w elevator, beautiful courtyard w/pool, newly decorated, close to everything, 55+ and 3-month min, \$900/month. Vero Beach, FL (772) 234-7070.

WANTED

COMPANION for mobile 90-year old female in CT Shoreline home, caregiver will be expected to do some cooking and light housekeeping.

North Haven (203) 239-1500.
CANING for several chair seats Middletown (860) 347-4003 or e-mail to ClayHewi@sbcglobal.net.

OLDER TUBE HI-FI AMPS, tuners, & guitar amps, any cond., working or not. "Put your junk in my trunk!" Hamden (203) 281-0005.

CHARLES CASELLA

Buying & Selling
Antiques & Collectibles

Post Cards ★ Stamps
 Photography ★ Toys
 Military ★ Advertising
 Bottles ★ Hunting
 Fishing ★ Baseball

FREE HOUSE CALLS
 (860) 528-8508

Lake Compounce Discounted Tickets for Our Members!

Regular Admission Tickets are Available for \$28.00 (regularly \$33.95)
 Each Ticket Includes a Contribution to Our McCusker Scholarship Fund!

A downloadable leaflet with details is available at our website online - or call our union Hall toll-free at (800) 894-9479 to request a copy!

Another Win...

(Continued from page 3)

Three weeks later, members turned out again, this time at the Legislative Office Building for the public hearing on a joint resolution to approve the collective bargaining agreement. In a move that no doubt surprised our members working in other state agencies, the Judicial Branch's Director of Human Resources joined us in testifying in favor of our contract.



“ This is the first time in nearly twelve years that CSEA has reached an agreement with the State before the expiration of the old contract. ”

Bob Rinker

Executive Director,
CSEA/SEIU Local 2001

The Appropriations Committee voted in favor of approving our new contract, 44 to 2. If, as expected, the full General Assembly does not vote on the House and Senate resolutions, its approval will be automatic around April 1.

Congratulations to our SJM Council members for this important win. Their example of strength and unity is one we should all aspire to!



**SJM Council
Treasurer
Frank Castro and
Fellow Members
Discuss Issues with
Lawmakers**

State of Connecticut Employees and Retirees!



5 reasons to switch your auto insurance carrier to MetLife Auto & Home®:

- Special Group Rates
- Better Coverage
- A Company You Know And Trust
- Convenient Payment Options
- Superior Service

Call or log on today for a free insurance review and no-obligation quotes!
1800 GET-MET 8 (1-800-438-6388)

Guarantees for the **if in life**™

MetLife®

Broker: Kronholm & Associates, Inc.
MetLife Auto & Home is a brand of Metropolitan Property and Casualty Insurance Company and its affiliates: Metropolitan Casualty Insurance Company, Metropolitan General Insurance Company, and Metropolitan Group Property and Casualty Insurance Company, all with administrative home offices in Warwick, RI. Coverage, rates, and discounts are available in most states to those who qualify. Guarantees apply to certain insurance and annuity products (not securities, variable or investment advisory products) and are subject to product terms, exclusions and limitations and the insurer's claims-paying ability and financial strength. PEANUTS © United Feature Syndicate, Inc. 1900029982(0307) Printed in U.S.A. 0610-2756 L03074146[exp0310]

DEATHS REPORTED

We regret to learn of the deaths of the following retired CSEA/SEIU Local 2001 members, as reported by the State Retirement Division:

Aristide Blais
of chapter 403 died 1/23/08
Lois Brown, 403, 1/16/08
J. Callanan, 426, 2/5/08
Richard Coletti, 405, 1/28/08
Donald Crouch, 403, 2/5/08
Julia Currier, 404, 2/5/08
Patricia Discola, 420, 1/21/08
Julia Jakiela, 406, 1/22/08
Sinclair Jennings, 410, 2/10/08
Theodore Johnson, 414, 1/26/07

Angela Jorsz, 403, 12/19/07
Gudrun Kelly, 401, 1/17/08
Tauno Krager, 403, 1/7/08
James McNally, 403, 1/25/08
Corinne Miceli, 406, 1/20/08
Margaret Moshier, 406, 12/17/08
Bernard O'Neill, 408, 1/8/08
Arthur Page, 403, 2/8/09
Katherine Page, 421, 1/30/08
Marion Pias, 416, 1/2/08
Thelma Pinski, 405, 1/13/08
Mitchell Posuniak, 408, 12/15/07
Wendell Poucher, 415, 1/24/08
Charles Robinson, 416, 1/18/08
Albert Seymour, 425, 12/11/07
Marjorie Smith, 420, 1/15/08
George Soter, 411, 2/9/08
Reeves Spencer, 405, 2/1/08
Richard Tallberg, 407, 2/01/08
Helen Vacchelli, 401, 1/31/08
Emma Webb, 420, 2/3/08
Raymond Zimmerman, 420, 12/22/07

*Our Thoughts Remain
with the Troops Overseas
and their Families*



New Long Term Healthcare...

(Continued from page 5)

decide if this is a viable option for their situation. A MetLife representative will be able to meet with you and discuss the options available, and their cost.

Because each member's situation is different, each aspect of the product is different, from what it covers to what it does not. Bear in mind; not everyone will be eligible. MetLife will review eligibility criteria including age, medical conditions, and the cost for personalized coverage.

Additionally, MetLife is establishing a nine-month open enrollment period with simplified underwriting available to all State employees, as well as retirees, dependent upon their age. After the enrollment period, all applicants will be subject to modified

underwriting, which includes additional medical questions.

The bottom line is that this new product offers an alternative to depleting personal assets to acquire expensive care out-of-pocket, or relying on Medicaid for long term care services.

To learn more, call the State of Connecticut Employee & Retiree Long Term Care Insurance Program through MetLife at (800) 582-2889. Administrative and related concerns should be directed to the Comptroller's Retirement & Benefit Services Division at (860) 702-3543.

Editor's note: current UNUM participants will continue to be serviced by MedAmerica, and can be reached for questions regarding current long term care participation at (877) 202-6043.



**Council 400 Chapter 424 President John Kirker
Introduces Representatives of State Health Plan
Carriers at the Annual Meeting in Sarasota**